

VENEZ DANSER LE PASO DOBLE

Marc Provance - Dominique Bellot - Sylvie Maubert

$\text{♩} = 125$

Mélodie instruments si bémol

DC.

1. 2.

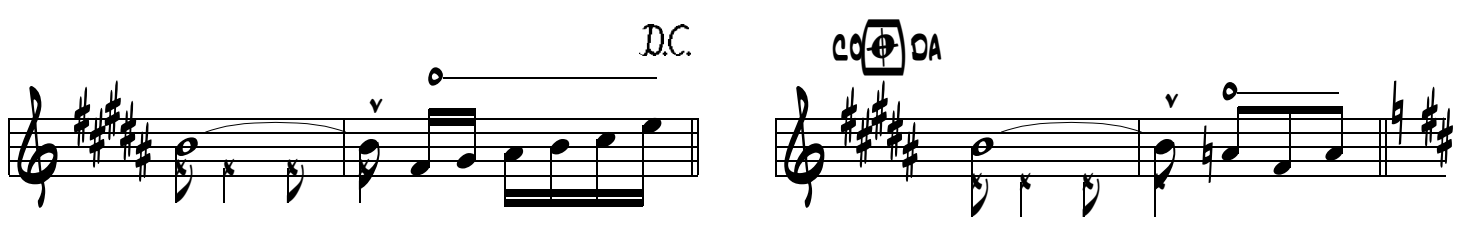
Detailed description: This system contains the first two staves of music. The first staff begins with a double bar line and repeat signs, followed by a 'DC.' marking. The music is in 2/4 time with a key signature of one sharp (F#). It features a series of eighth and sixteenth notes, with accents and slurs. The second staff continues the melody and includes first and second endings, marked '1.' and '2.' respectively.

COUplet

Detailed description: The Couplet section consists of five staves of music. The first staff starts with a double bar line and repeat signs. The second and third staves feature a melodic line with a slur. The fourth staff includes a first ending marked '1.'. The fifth staff includes a second ending marked '2.' and concludes with a double bar line and repeat signs.

REFRAIN

Detailed description: The Refrain section is a single staff of music. It begins with a double bar line and repeat signs, followed by a key signature change to two sharps (F# and C#). The melody consists of a series of quarter and eighth notes.



REFRAIN

