

# TROMBA CHE CONCERTA

Musique by Dominique Bellot & Pascal Hamard

\* Trompette Si bémol \*

♩ = 75

A la première reprise jouez la 2eme ligne

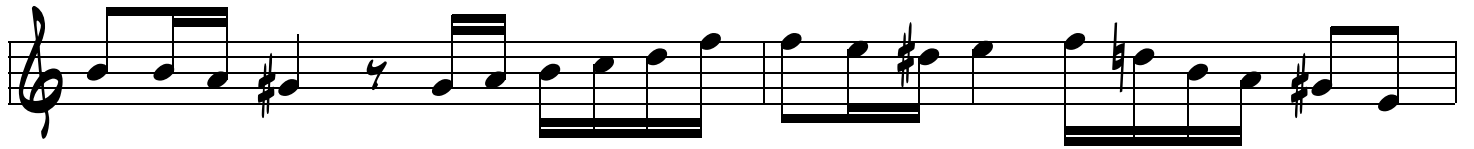
The first system consists of two staves. The top staff begins with a first ending bracket over the first two measures. Below the first ending, there is a second line of music. The bottom staff contains a bass line with a long note in the first measure and a melodic line in the second measure.

The second system continues the musical piece with two staves. The top staff features a melodic line with various intervals and accidentals. The bottom staff provides a harmonic accompaniment with a long note in the first measure and a melodic line in the second measure.

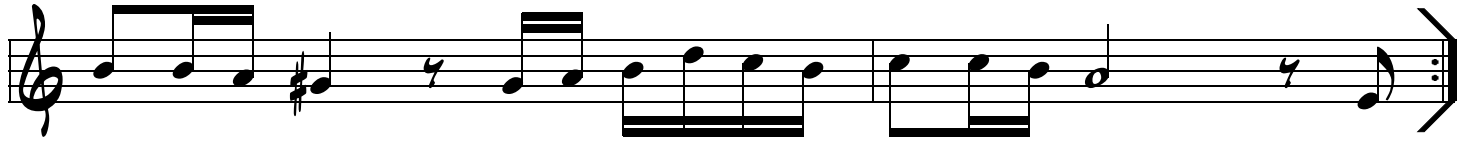
The third system continues the musical piece with two staves. The top staff features a melodic line with various intervals and accidentals. The bottom staff provides a harmonic accompaniment with a long note in the first measure and a melodic line in the second measure.

The fourth system continues the musical piece with two staves. The top staff features a melodic line with various intervals and accidentals. The bottom staff provides a harmonic accompaniment with a long note in the first measure and a melodic line in the second measure.

The fifth system continues the musical piece with two staves. The top staff features a melodic line with various intervals and accidentals. The bottom staff provides a harmonic accompaniment with a long note in the first measure and a melodic line in the second measure.



1.2.



3.

